

# Passive DC signal isolator

## SINEAX 211, EURAX 211

without power supply

- Electrical insulation of a 0...20 mA measurement / supply circuit of a two-wire transmitter
- No power supply
- Input or output intrinsically safe

### Type of protection



II (1) G resp. II (2) G

[EEx ib] IIC resp. [EEx ia] IIC

### Certificates

Mechanical design	
Housing N, SINEAX	PTB 98 ATEX 2176
Plug-in module, EURAX	PTB 98 ATEX 2177X *)

### Output EEx ia

$U_o = 12.6 \text{ V}$   
 $I_o = 100 \text{ mA}$   
 $P_o = 300 \text{ mW}$   
 linear output characteristic

	Both $L_o$ and $C_o$			
	IIC	IIB	IIC	IIB
$L_o$	4 mH	15 mH	2 mH	7.8 mH
$C_o$	1.15 $\mu\text{F}$	7.4 $\mu\text{F}$	322 nF	1.0 $\mu\text{F}$

### Input EEx ib

For connection to certified intrinsically safe circuit with following maximum values:  
 $U_o \leq 30 \text{ V}$  and  $I_o \leq 100 \text{ mA}$   
 $C_i$  and  $L_i$  are negligible

### \*) Special features for EURAX 89-211-...:

The signal isolator must be installed in such a way that at least protection class IP 20 acc. to EN 60 529 is attained.

Only passive ungrounded measuring devices may be briefly connected to test sockets 89-211-12 and 89-211-22.

Only passive measuring devices or devices with battery or power pack supplies and operating voltages less than 250 V may be briefly connected to test sockets 89-211-11 and 89-211-21.

### Input

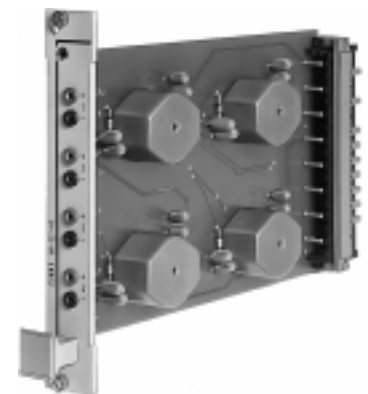
$U_{nom}: 15 \text{ V}$   
 $I_{nom}: 20 \text{ mA}$   
 Only for connection to equipment with operating voltages  $\leq 250 \text{ V}$

### Output

$U_{nom}: 15 \text{ V}$   
 $I_{nom}: 20 \text{ mA}$   
 Only for connection to equipment with operating voltages  $\leq 250 \text{ V}$



SINEAX 84-211-1. in housing N  
1 channel



EURAX 89-211-1 as 19" plug-in module  
4 channels